

PRODUCT DATASHEET (VER. 03/10.2012)

1. 1 Product name

Aluminum plates.

2. Characteristics and intended use

Aluminum plates are used as both heating screens and pipe brackets.

The plates are intended for fitting underfloor heating in the drywall systems. They are especially recommended for building renovations (wooden floor on joists) and the construction of timber frame houses.

Underfloor heating laid with the drywall method is characterized by much lower weight than wet building systems. Therefore, they can be used in rooms with low bearing capacity floors or in situations where for various reasons the wet method is impossible.

Lack of screed also means lower profile of floor heating, which is essential in case of renovation.

3. Product codes

Product codes	Aluminum plate type
AluPlate	
9-1700-001-00-21-00	AluPlate Ø16 single channel without cuts
9-1700-001-27-21-00	AluPlate Ø16 single channel with cuts
9-1700-002-00-21-00	AluPlate Ø16 double channel without cuts
9-1700-002-27-21-00	AluPlate Ø16 double channel with cuts
9-1710-001-27-21-00	AluPlate Ø20 single channel with cuts
AluPlate with insulation	
9-1705-002-00-21-00	AluPlate Ø16 double channel without cuts
9-1705-002-27-21-00	AluPlate Ø16 double channel with cuts
9-1705-001-00-21-00	AluPlate Ø16 single channel without cuts
9-1705-001-27-21-00	AluPlate Ø16 single channel with cuts
Ending turn	
9-1750-016-00-21-00	Styrofoam ending turn Ø16

4. Logistic data

Product code	Individual box			1,6m Pallet			2,0m Pallet		
	Amount per box [pcs.]	Dimensions length x width x height [mm]	Weight [kg]	Amount per pallet [pcs.]	Amount of individual boxes per pallet [pcs.]	Weight [kg]	Amount per pallet [szt.]	Amount of individual boxes per pallet [pcs.]	Weight [kg]
AluPlate									
9-1700-001-00-21-00	50	1018x405x210	16,25	600	12	215	800	16	280
9-1700-001-27-21-00	50	1018x405x210	16,25	600	12	215	800	16	280
9-1700-002-00-21-00	40	1015x735x200	25,5	400	10	275	480	12	326
9-1700-002-27-21-00	40	1015x735x200	25,5	400	10	275	480	12	326
9-1710-001-27-21-00	40	1170x500x415	-	160	4	-	240	6	-
AluPlate with insulation									
9-1705-002-00-21-00	22	1002x400x405	10,5	176	8	104	220	10	125
9-1705-002-27-21-00	22	1002x400x405	10,5	176	8	104	220	10	125
9-1705-001-00-21-00	11	1002x400x405	10,5	88	8	104	110	10	125
9-1705-001-27-21-00	11	1002x400x405	10,5	88	8	104	110	10	125
Ending turn									
9-1750-016-00-21-00	10	402x150x306	-	-	-	-	-	-	-

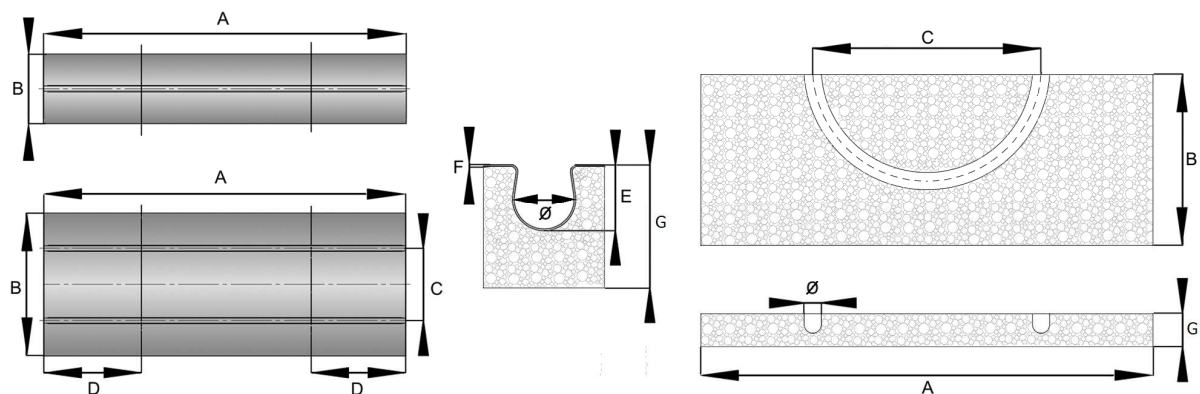
5. Structure and materials used.

The plates are made of aluminum 1050 h24 with thermal conductivity 237 W / (m · K) enabling even distribution of heat or cool over the entire heating surface.

In addition, the use of isolation in a form of specially shaped polystyrene panels from expanded polystyrene, prevents from uncontrolled flowing of heat deep into the floor and provides excellent thermal insulation minimizing heat loss.

Aluplates are optionally equipped with notches placed 25 cm from the edge and thus allow quick and easy adjustment of the plate length.

6. Technical data



Product code	Dimensions [mm]								NOTCHES	NO CHANNELS	MATERIAL
	Ø	A	B	C	D	E	F	G			
AluPlate											
9-1700-001-00-21-00	16	1000	195	-	-	18,5	0,5	-	-	1	Aluminium 1050 h24
9-1700-001-27-21-00	16	1000	195	-	250	18,5	0,5	-	✓	1	Aluminium 1050 h24
9-1700-002-00-21-00	16	1000	365	200	-	18,5	0,5	-	-	2	Aluminium 1050 h24
9-1700-002-27-21-00	16	1000	365	200	250	18,5	0,5	-	✓	2	Aluminium 1050 h24
9-1710-001-27-21-00	20	1150	270	-	250	22,5	0,5	-	✓	1	Aluminium 1050 h24
AluPlate with insulation											
9-1705-002-00-21-00	16	1000	400	200	-	30	0,5	30	-	2	Aluminium 1050 h24/ expanded polystyrene
9-1705-002-27-21-00	16	1000	400	200	-	30	0,5	30	✓	2	Aluminium 1050 h24/ expanded polystyrene
9-1705-001-00-21-00	16	1000	200	-	-	30	0,5	30	-	1	Aluminium 1050 h24/ expanded polystyrene
9-1705-001-27-21-00	16	1000	200	250	-	30	0,5	30	✓	1	Aluminium 1050 h24/ expanded polystyrene
Zakończenie tulkowe											
9-1705-002-00-21-00	16	400	150	200	-	30	-	30	-	2	expanded polystyrene

7. Advantages

- Due to the lack of screed, drywall construction system using AluPlates is significantly lighter than wet construction systems
- No need to use screed enables lower profile of floor heating,
- AluPlates due to its characteristics and structure create radiator evenly distributing heat over the entire surface while acting as a pipe brackets
- 1 or 2-channel Aluplates additionally equipped with notches made 25 cm from the edge of the plate enable fast breaking plates and dividing it into sections with lengths of 25 cm, 50 cm and 75 cm without the use of tools.

8. Warranty and responsibilities

During installation works, follow safety rules contained in the regulations and standards of construction. Capricorn Sp. z o.o. provides statutory warranty on the AluPlates from the date of sale under the following conditions:

1. Use of the product for its intended purpose.
2. Proper storage such as:
 - a. horizontal transport and storage on a level, flat surface that minimizes the risk of bending or damage
 - b. no direct exposure to humidity
3. Protection against mechanical damage during loading, unloading and storage.

Installation by a trained and qualified person in accordance with current guidelines, standards and technical information .

9. Manufacturer

Capricorn S.A.

Ciernie 11

58-160 Świebodzice

tel./fax +48/74/854 05 16

www.capricorn.pl

e-mail: capricorn@capricorn.pl

The products, photographs, drawings, diagrams and descriptions set out in this document are subject to change by Capricorn S.A. without notice and without stating reasons. For the latest news on our products and launches, visit our website at www.capricorn.pl.

Capricorn S.A.

Ciernie 11, 58-160 Świebodzice

Tel.: +48 74 854 05 16, fax: +48 74 722 28 18, bok@capricorn.pl